



PRS

POWER REPAIR SERVICE, INC.

ROTATING EQUIPMENT REPAIR



MECHANICAL
Industrial Shop Services



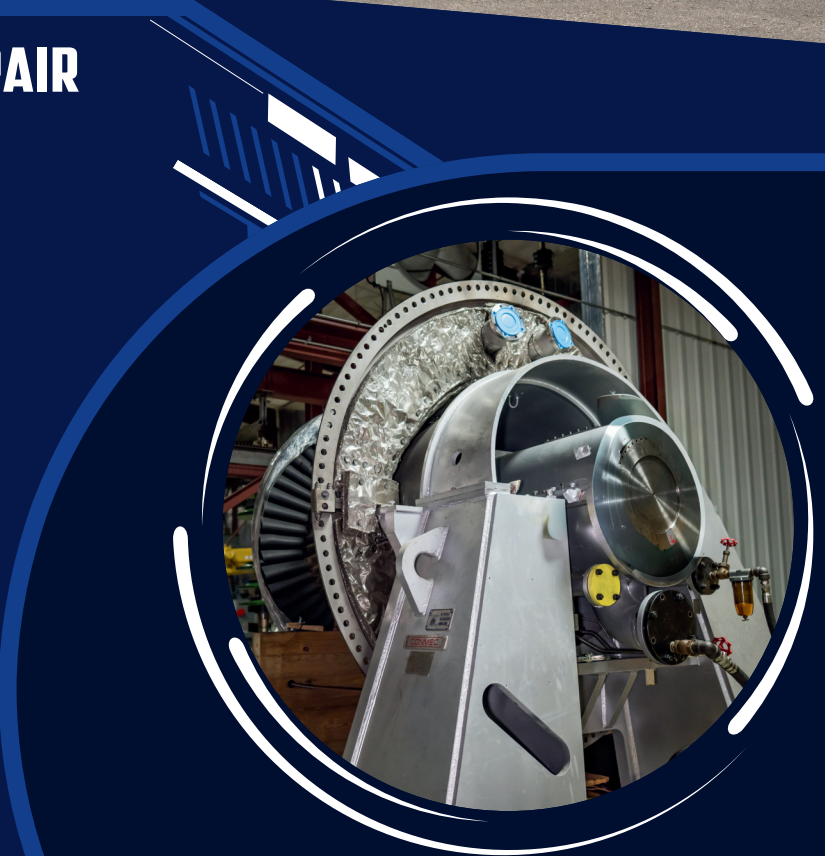
MACHINING
CNC and Manual Machining



WELDING
Field and Shop Services



FIELD
Maintenance, Turnaround and
Emergency Services



SCAN TO VISIT
OUR WEBSITE



(361) 289-1471



<https://powerrepair.net/>



314 McBride Lane
Corpus Christi, Texas 78408

Power Repair Service, Inc. is your trusted partner for reliable in-shop and on-site field services across Corpus Christi and the surrounding areas. Our skilled team delivers precision machining, custom fabrication, equipment repair, and comprehensive field support. With the expertise to manage projects of any scale, we proudly serve a wide range of industries with quality solutions designed to keep your operations running smoothly.



Who We Are

Power Repair Service, Inc. has been family-owned and operated since 1965, now proudly in its third generation. With over 80 full-time employees, we serve industries including oil and gas, marine, mining, chemical, petrochemical, agriculture, and construction. Guided by the legacy of our founders, we combine tradition, expertise, and innovation to deliver exceptional technical services while continually investing in our people and facilities to meet modern industry demands.

Why Choose Us



Legacy of Excellence

Over 60 years of proven service across multiple industries.



Dedicated Workforce


A team of 80+ skilled employees committed to quality and innovation.



Customer-First Approach

Fast, responsive service built on integrity and long-standing relationships.

Contact Us

 (361) 289-1471

 <https://powerrepair.net/>

MECHANICAL, MACHINING & FIELD SERVICES



Mechanical Services

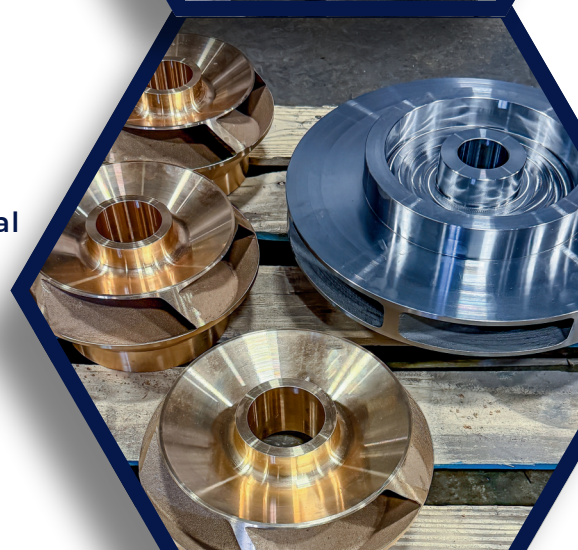
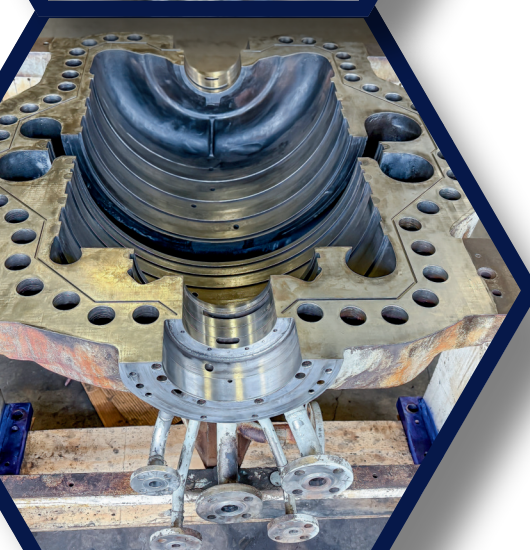
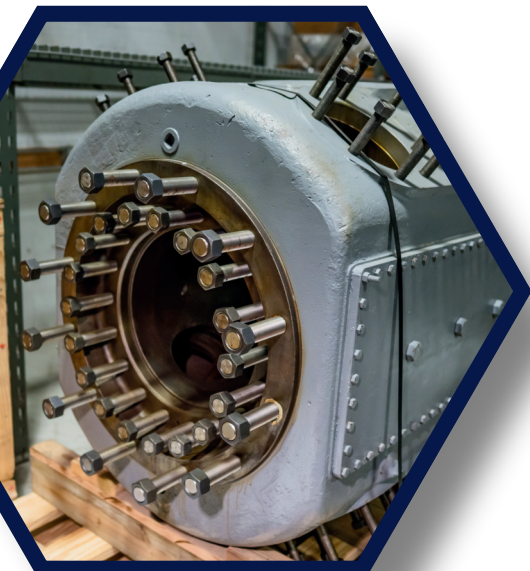
- Pumps
- Compressors
- Turbines
- Gearboxes
- Blowers
- Hot Gas Expanders
- Mixers
- Equipment Disassembly/Assembly
- Full Inspection and Repair
- Diagnosis
- Farm and Heavy Equipment Repair
- Hydraulic Cylinder Repair
- Mining Equipment
- Oilfield Equipment
- Dredging Equipment
- Marine Equipment
- Pressing and pulling capacity up to 200 tons
- Abrasive blasting and paint
- 50 ton bridge crane
- 36,000 # forklift

Machining Services

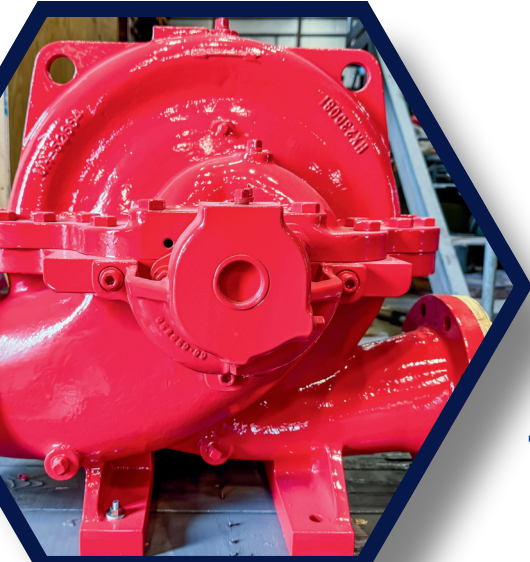
- Manual Machines
- CNC Machines
- Reverse Engineering/CAD
- 3D Scanning

Field Services

- Tool Trucks
- Flatbed Trucks
- Crane Trucks
- Field Machining
- Mechanic Services
- New installation and repairs
- Preventative and predictive maintenance
- Millwright Services
- Grouting Services
- Hydraulic torquing
- Precision leveling and alignments
- Field balancing and vibrational analysis
- Welding
- Service to all brands
- Troubleshooting and diagnostics
- Traveling field services available



STORAGE SERVICES, THERMAL SPRAY COATING & WELDING



Storage Services

- Monitored Climate controlled storage
- Vertical rotor storage
- Electric motor storage
- Heater hook ups
- Monthly rotation checks
- 24/7 Access
- Security monitoring



Thermal Spray Coating

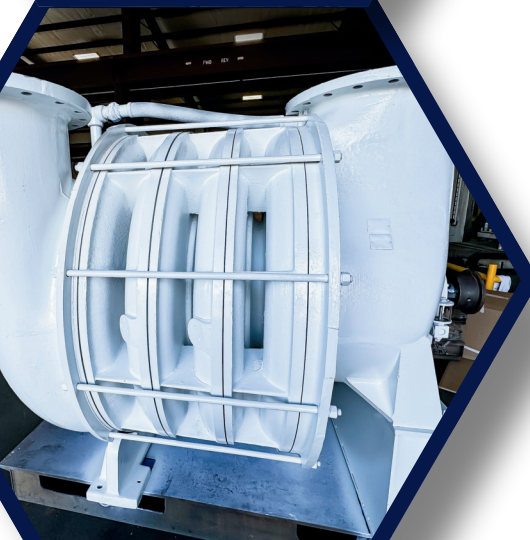
Power Repair Service also offers the Jet Kote II Surfacing System which applies high bond strength and high density coating measured over 1200psi:

- 316 SS
- Hastelloy C
- Tungsten Carbide
- Inconel



Welding

- Types of alloys
 - stainless steel alloys, carbon steel, aluminum, inconel, monel, nickel, and Stellite 6
- Welding abilities
 - gas tungsten arc welding (GTAW), gas metal arc welding (GMAW), shield metal arc welding (SMAW), plasma cutting, arc gouging, and plasma welding/star welding
- Welding truck
 - Miller Big 40 Diesel machine



MANUAL, CNC MACHINING, & TECHNOLOGY



Manual Machining


- Horizontal Lathes
- Vertical Lathes
- Manual HBM
- Manual C-Frame Mills
- Manual Knee Mills
- Saw
- Grinder Machines
- Broaching Machines
- Thread Rolling Machines

CNC Machining

- CNC Lathes
- CNC VTL
- CNC Mill-Turn
- CNC Vertical Mills
- CNC HBMs

Technology

- Top-Grade Industry Software
 - SOLIDWORKS Premium
 - Mastercam (Lathe, Mill2D, Mill3D, Mill-Turn, Multi-axis)
 - DesignX Pro
 - FARO CAM2 Full Edition
- Reverse Engineering (Laser/Probe)
 - FARO Quantum X.S 2.5m w/8th axis (LLP: FAROBlu xR)

 [\(361\) 289-1471](tel:(361)289-1471)

 <https://powerrepair.net/>

 314 McBride Lane
Corpus Christi, Texas 78408

